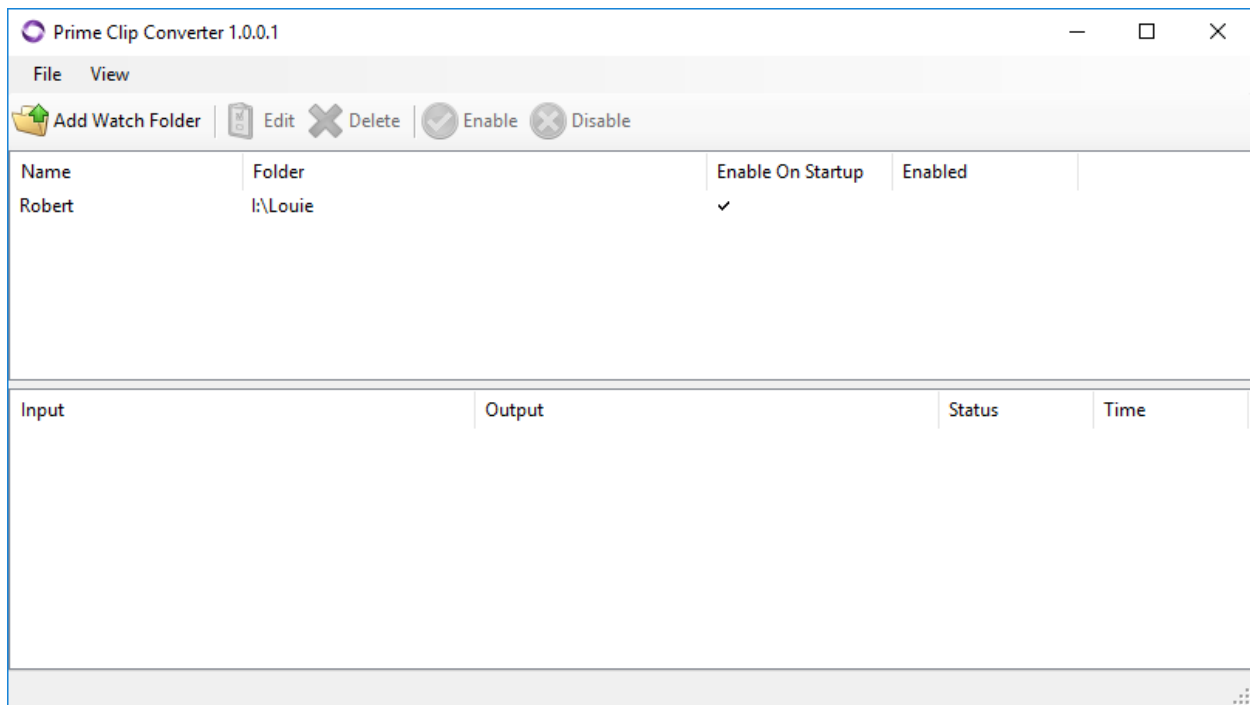




# Folder Watcher & Clip Converter User Guide

v 4.9

## Prime Clip Converter



## Watch Folder

The **Watch Folder** detects incoming media, such as AVI files or image sequences, and automatically transcodes them to the ChyronHego native GTC format.

The following parameters are displayed in the **Watch Folder Settings** panel:

- **Name:** The name given to the **Watch Folder**.
- **Enable on Startup:** If enabled, the **Watch Folder** will be enabled every time PowerClips is started.
- **Folder:** The file path of the folder to be used as a **Watch Folder**.
- **Status:** Will display enabled or disabled as the status of the **Watch Folder**.

To add a **Watch Folder**:

- Select **Watch Folder** on the top menu bar of the **Watch Folder Settings** panel. [See Adding a Watch Folder.](#)

To edit a **Watch Folder**:

- Make sure that the **Watch Folder** you would like to edit is disabled, then select **Edit** on the top menu bar of the **Watch Folder Settings** panel.

To delete a **Watch Folder**:

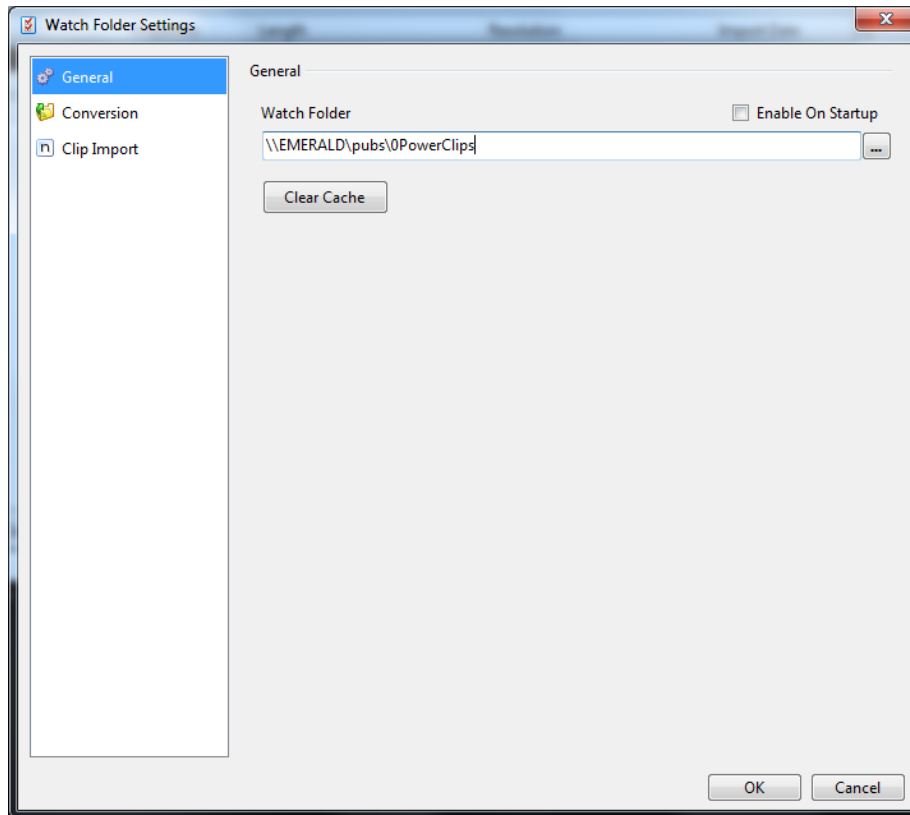
- Select **Delete** on the top menu bar of the **Watch Folder Settings** panel.

To enable/disable a **Watch Folder**:

- Select **Enable/Disable** on the top menu bar of the **Watch Folder Settings** panel.

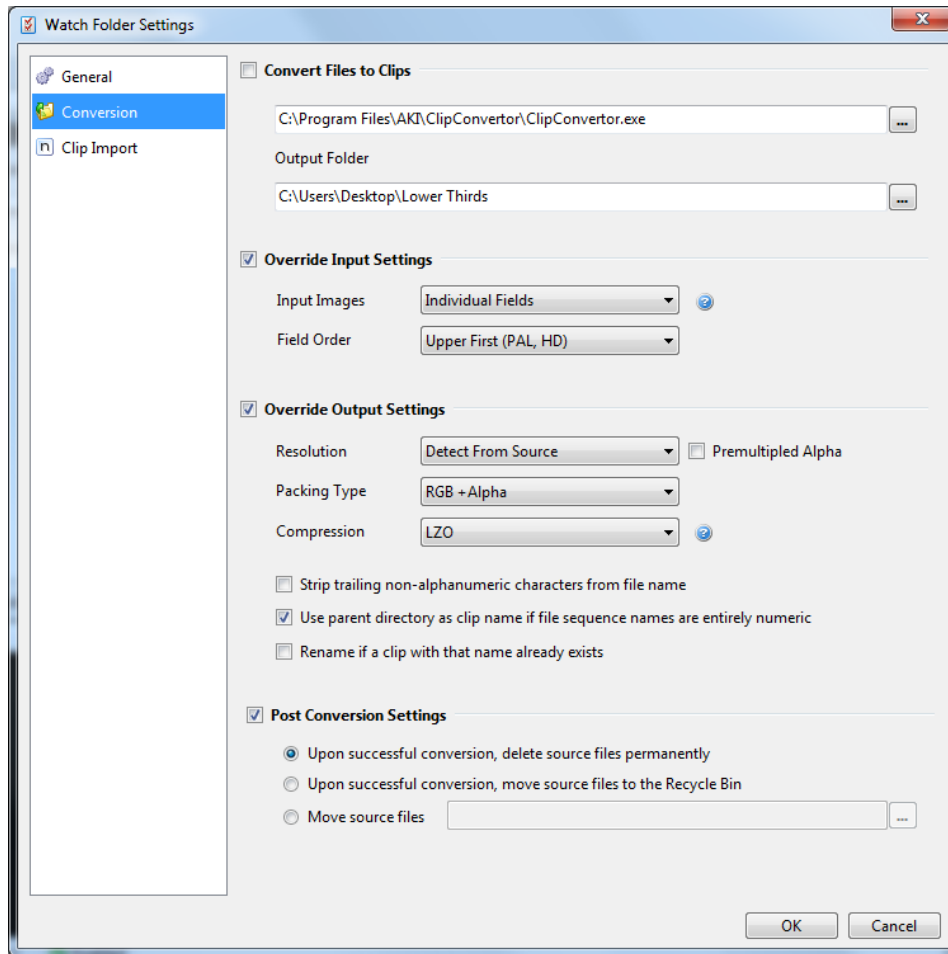
## Adding a Watch Folder

There are a variety of options that may be configured while adding a **Watch Folder**.



The **General** submenu in the **Add Watch Folder Settings** panel has the following parameters:

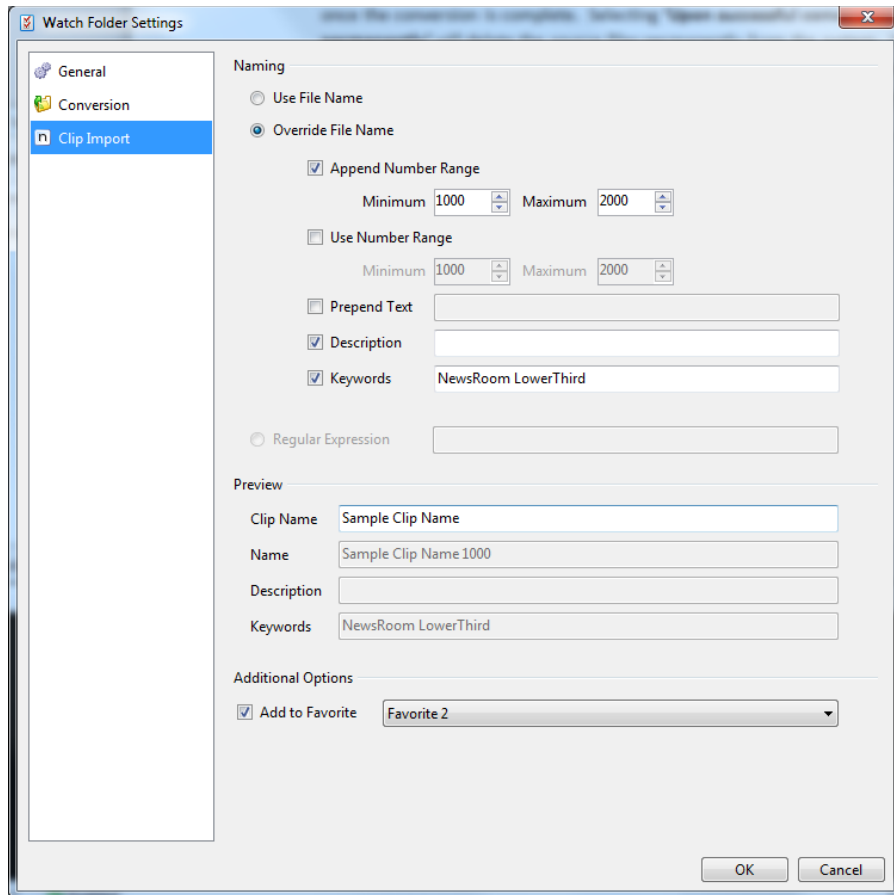
- **Enable On Startup:** If enabled, the currently selected **Watch Folder** will be automatically enabled each time that PowerClips is started.
- **Watch Folder:** Select the ellipses icon to specify the file path of the folder to be used as the **Watch Folder**. This file path is displayed in the text box.
- **Clear Cache:** Select this option to clear the cache.



The **Conversion** submenu in the **Add Watch Folder Settings** panel has the following parameters:

- **Convert Files to Clips:** Enable this option to automatically convert files in the **Watch Folder** to the PRIME GTC format.
- **Output Folder:** Specify the file path of the location the converted clips will be added to.
- **Override Input Settings:** Enabling this option allows the user to determine the input settings of the clips to be converted.
  - The **Input Images** drop down menu allows the user to choose between **Progressive Frames**, **Individual Fields** and **Interlaced Frames**. **Progressive Frames** contain a full frame with no shift or motion. **Individual Fields** contain a single field with an alternating scanline shift to create a frame. **Interlacing Fields** contain two fields used in conjunction to create a frame.
  - The **Field Order** determines how the fields are laid in an **Interlaced Field**. Since the two interlacing field lines are drawn in an alternating pattern, the order must be determined. Selecting **Upper First** will draw the second field first, generally used for PAL and HD formats, while selecting **Lower First** will draw the first field first, generally used for NTSC formats.

- **Override Output Settings:** Enabling this option allows the user to determine the output settings of the clips to be converted.
  - The **Resolution** drop down menu allows the user to determine the **Resolution** at which the clip will be played out. The options are: **Detect from source, PAL (4x3 & 16x9), NTSC (4x3 & 16x9)** and **HD (720 & 1080)**.
  - If an **Alpha** is used in the **Packaging Type**, then enabling **Premultiplied Alpha** will multiply the color by the alpha value to save on additional multiplications during compositing.
  - The **Packaging Type** drop down menu allows the user to determine how the output will be packaged. The choices are **RGB + Alpha, Alpha or YCbCr422**.
  - The **Compression** drop down menu allows the user to determine the type of compression used for the files. **LZO** is slower read/ higher compression, **JPEG** is fast read, high compression and **RLE** is fast read/low compression.
  - Enabling **'Strip trailing non-alphanumeric characters from file name'** will take any non-alphanumeric characters found in the file name and delete them.
  - Enabling **'Use parent directory as clip name if file sequence names are entirely numeric'** will replace the file name with the name of the parent directory if the original file name comprises of only numeric characters.
  - Enabling **'Rename if a clip with that name already exists'** will automatically rename the clip if a clip with the same name already exists.
- **Post Conversion Settings:** If enabled, determines what should be done with the source files once the conversion is complete. Selecting **'Upon successful conversion, delete source files permanently'** will delete the source files permanently from the system. Selecting **'Upon successful conversion, move source files to the Recycle bin'** will move the source files to the system Recycle bin. Selecting **'Move source files'** allows the user to determine a file path where the source files will be moved to upon successful conversion.



The **Clip Import** in the **Add Watch Folder Settings** panel displays the following parameters:

- **Use File Name:** Enabling this option keeps the original file names from the **Watch Folder**.
- **Override File Name:** Enabling this option takes the original file names from the **Watch Folder** and alters it in a number of ways:
  - **Append Number Range:** Enabling this option adds a number after the file name starting from the minimum and ending with the maximum as defined by the user.
  - **Use Number Range:** Enabling this option replaces the original file name with a number starting from the minimum and ending with the maximum as defined by the user.
  - **Prepend Text:** Enabling this option adds text before the original file name as defined by the user.
  - **Description:** Enabling this option will add a description of the clip as defined by the user.
  - **Keywords:** Enabling this option will add keywords of the clip as defined by the user.
- The **Preview** panel displays how the file name will look if the **Override File Name** option is enabled.

Enabling **Add to Favorite** in the **Additional Options** panel allows the user to determine a **Fav**