

PRIME Lyric Mode Configuration User Guide

Version 4.10.9

April 2025



Chyron PRIME Lyric Mode Configuration Guide • 4.10.9 • April 2025 • This document is distributed by Chyron in online (electronic) form only, and is not available for purchase in printed form.

This document is protected under copyright law. An authorized licensee of Chyron PRIME Lyric Mode may reproduce this publication for the licensee's own use in learning how to use the software. This document may not be reproduced or distributed, in whole or in part, for commercial purposes, such as selling copies of this document or providing support or educational services to others.

Product specifications are subject to change without notice and this document does not represent a commitment or guarantee on the part of Chyron and associated parties. This product is subject to the terms and conditions of Chyron's software license agreement. The product may only be used in accordance with the license agreement.

Any third party software mentioned, described or referenced in this guide is the property of its respective owner. Instructions and descriptions of third party software is for informational purposes only, as related to Chyron products and does not imply ownership, authority or guarantee of any kind by Chyron and associated parties.

This document is supplied as a guide for Chyron PRIME Lyric Mode. Reasonable care has been taken in preparing the information it contains. However, this document may contain omissions, technical inaccuracies, or typographical errors. Chyron and associated companies do not accept responsibility of any kind for customers' losses due to the use of this document. Product specifications are subject to change without notice.

Copyright © 2025 Chyron, ChyronHego Corp. and its licensors. All rights reserved.

Table of Contents

Introduction..... 3

Requirements..... 4

Installation..... 4

 PRIME..... 4

 LyricX..... 4

Configuration..... 5

 PRIME..... 5

 LyricX..... 9

Restrictions..... 11

INTRODUCTION

Lyric Mode allows a LyricX Output Channel to be routed to a single PRIME Output Channel. In this mode it is expected that LyricX is either to be automated or is to be displayed on a second monitor.

REQUIREMENTS

LyricX 4.6 or later

PRIME 3.6 or later

MX or HX system

INSTALLATION

Lyric Mode requires a side by side installation of LyricX 4.6 and Prime 3.6.

PRIME

Do a Full Installation

LyricX

Do not install LyricX IO, as these components will be installed by GS2.

CONFIGURATION

PRIME

Prime must be configured first. Add an NDI or SDI channel

- The Channel Type must be Video + Key Out
- The Output Channel must not have a Preview Channel linked, as the Output Channel is reserved to receive video from LyricX, there is no PRIME Preview to display.

Playout Configuration

Video Channels Add Output Add Input Import Export ?

Channel ☒ Output 1 ✕

Device

Type 8 Bit

Connector Video Key

Name

Video Standard

Video Shape

Downstream Input

Audio Mode

Audio Channels

Genlock Source

Genlock Timing (H/V)

Antialiasing

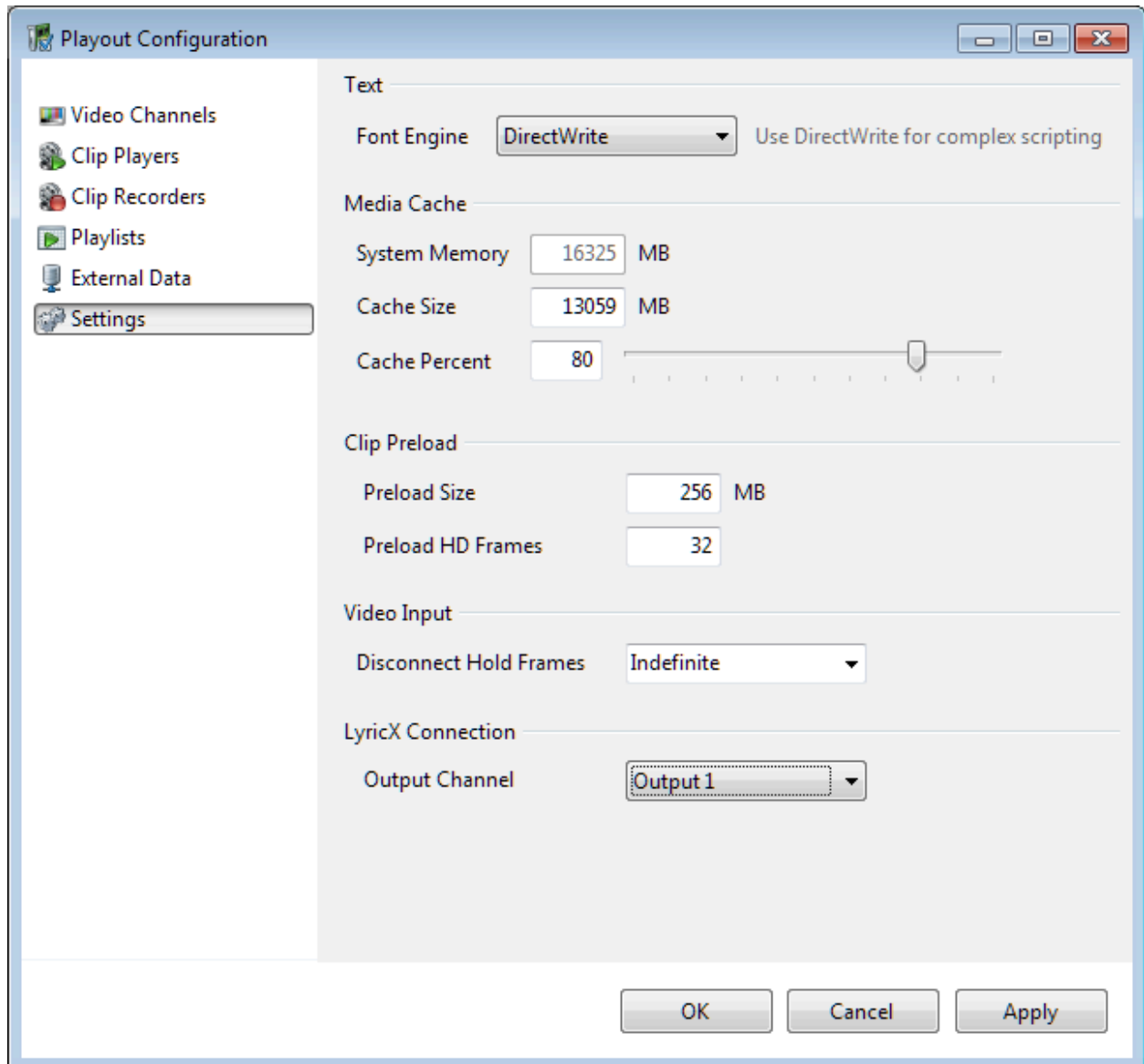
Preview Channel

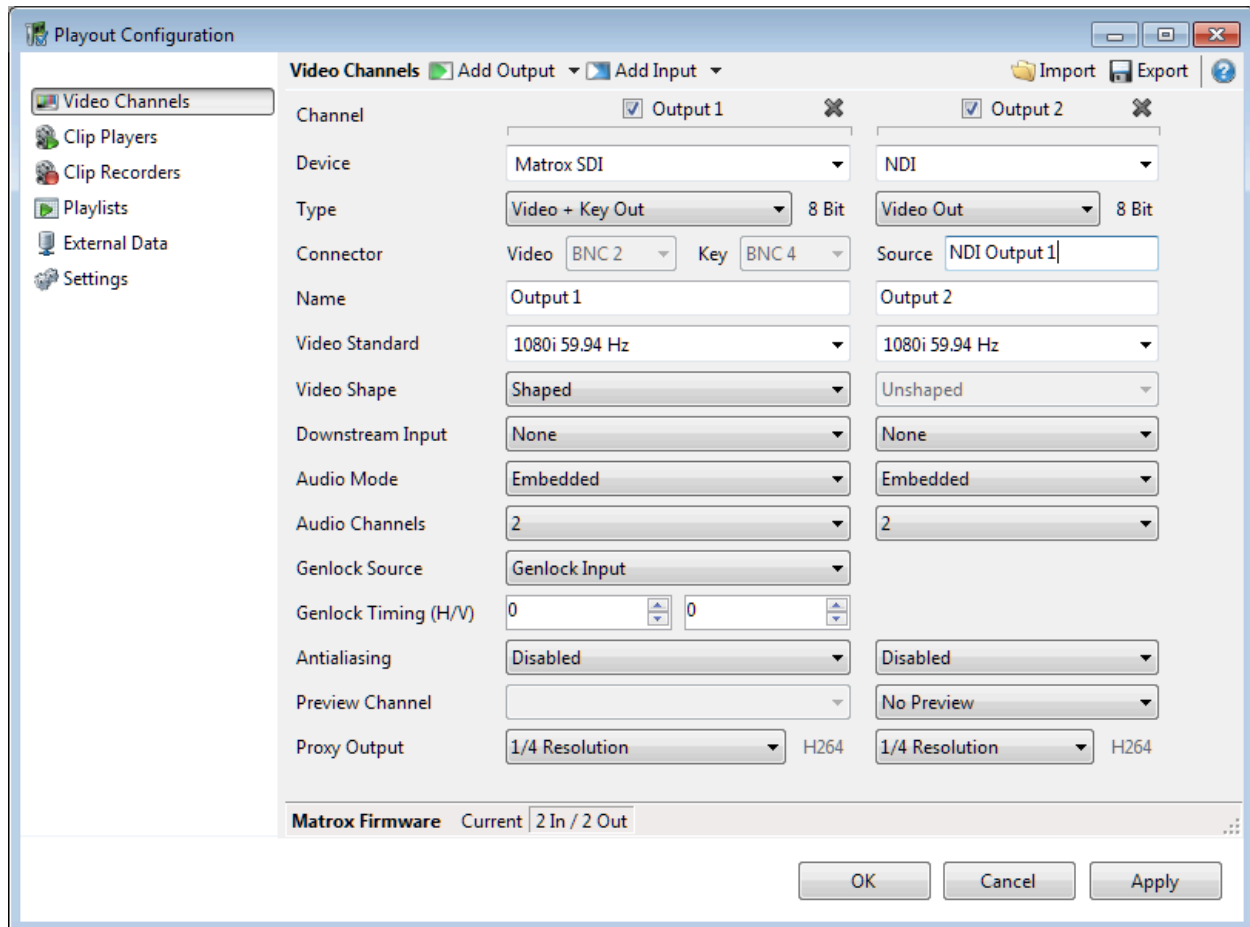
Proxy Output H264

Matrox Firmware Current

OK Cancel Apply

Under the Settings tab, all Output Channels which can receive video from LyricX will be listed by name under LyricX Connection.

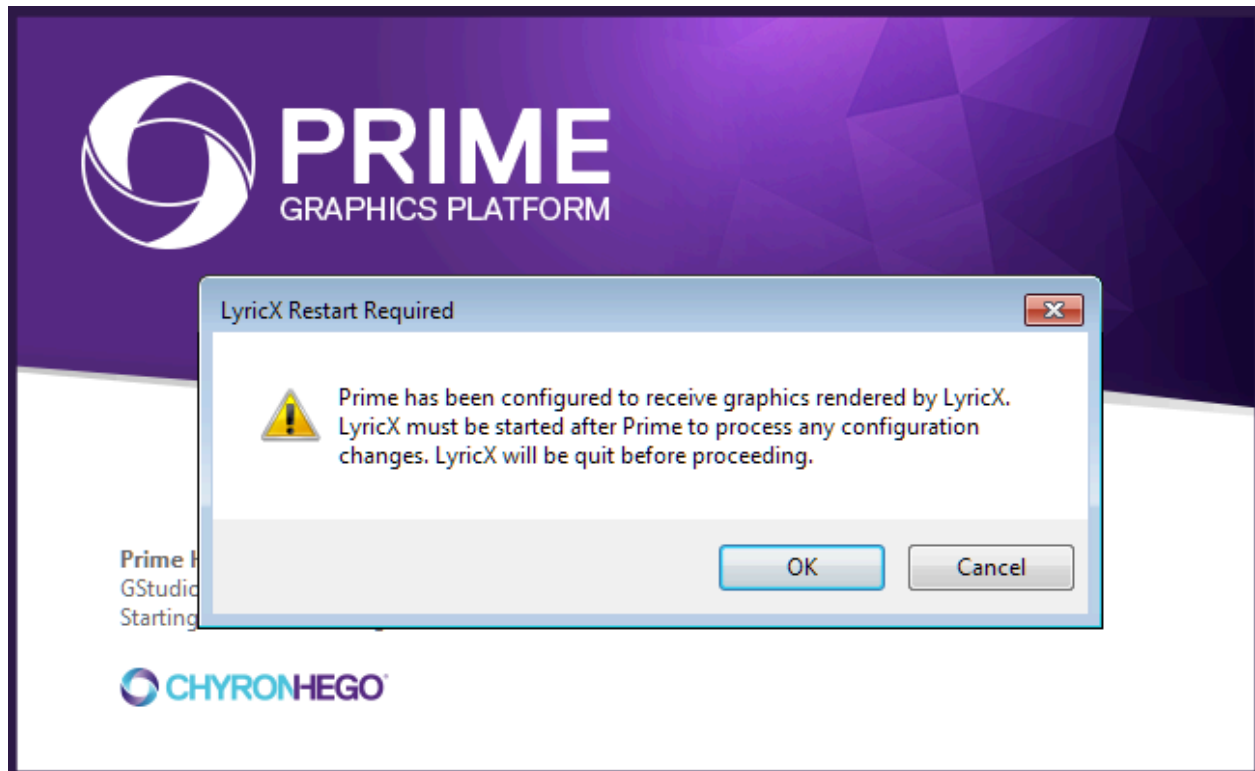




Once the Configuration is applied, restart Prime to initialize GS2 with a connection available to LyricX.

- If LyricX was already started prior to PRIME being configured in this way, the following warning will be presented

“Prime has been configured to receive graphics rendered by LyricX. LyricX must be started after Prime to process any configuration changes. LyricX will be quit before proceeding.”



On hitting OK, LyricX will be closed.

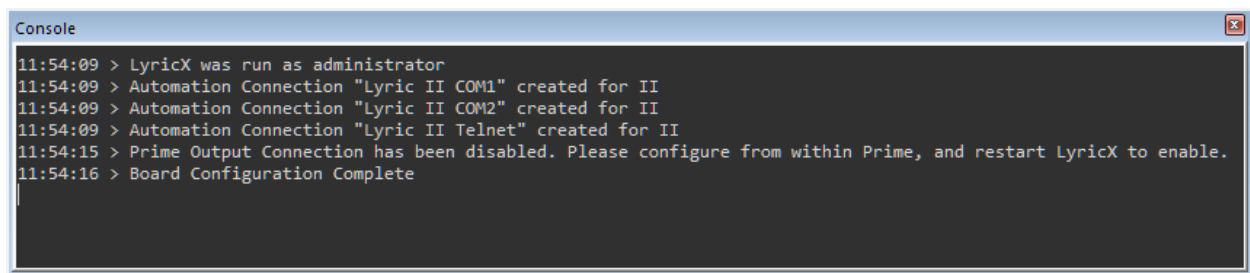
LyricX

If LyricX and PRIME are both installed, but Prime Mode has not been configured, LyricX will run normally as if standalone.

- SDI Input and Output, and NDI Output will be supported as normal in LyricX standalone.
- The following information will be provided in the console window

“Prime Output Connection has been disabled. Please configure from within Prime, and restart LyricX to enable.”

- PRIME will be removed as an Output Device option in the Input and Output Configuration Dialog.



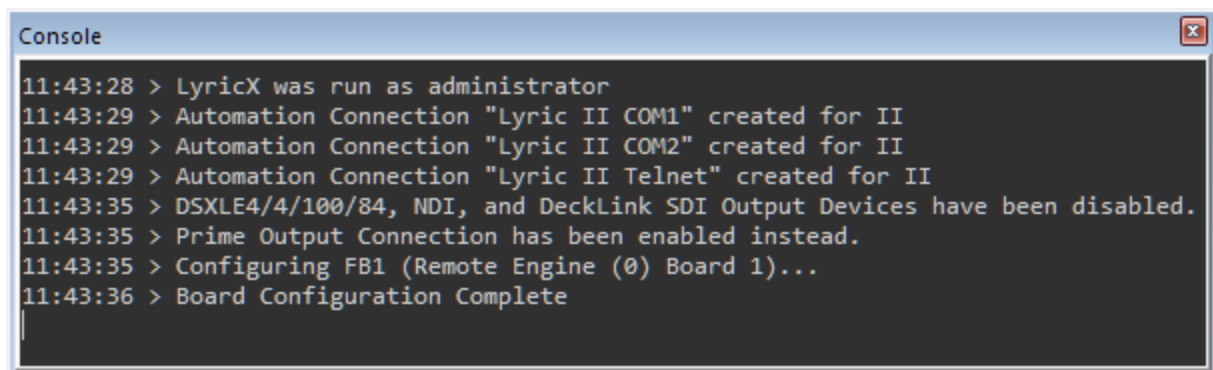
```
Console
11:54:09 > LyricX was run as administrator
11:54:09 > Automation Connection "Lyric II COM1" created for II
11:54:09 > Automation Connection "Lyric II COM2" created for II
11:54:09 > Automation Connection "Lyric II Telnet" created for II
11:54:15 > Prime Output Connection has been disabled. Please configure from within Prime, and restart LyricX to enable.
11:54:16 > Board Configuration Complete
```

If PRIME Mode has been configured, LyricX will disable all SDI and NDI devices in the system.

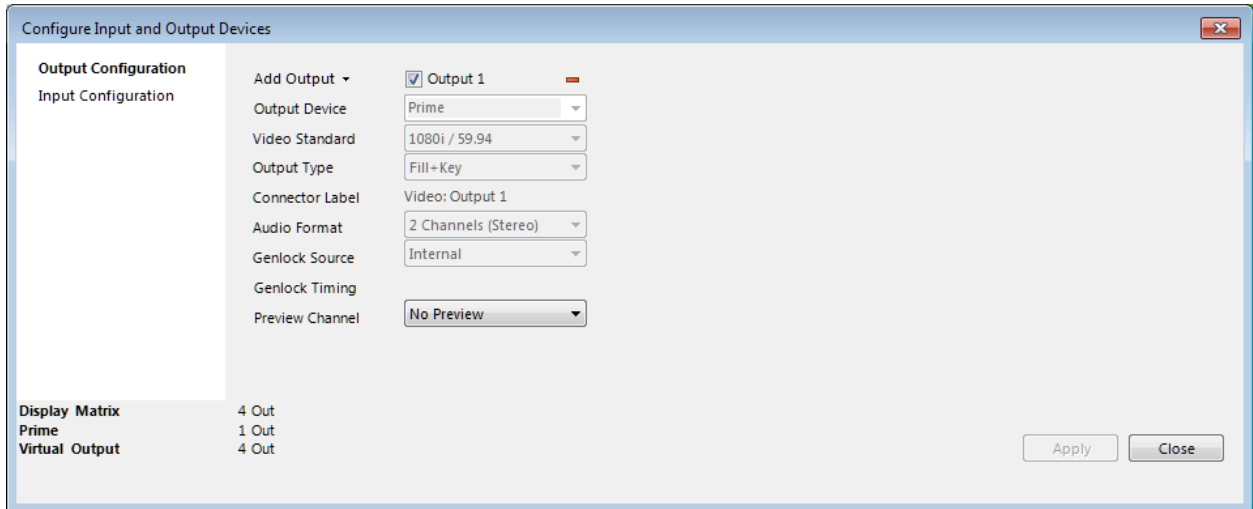
- The following information will be provided to the user in the console window

“(DeviceNames) Output Devices have been disabled. Prime Output Connection has been enabled instead.”

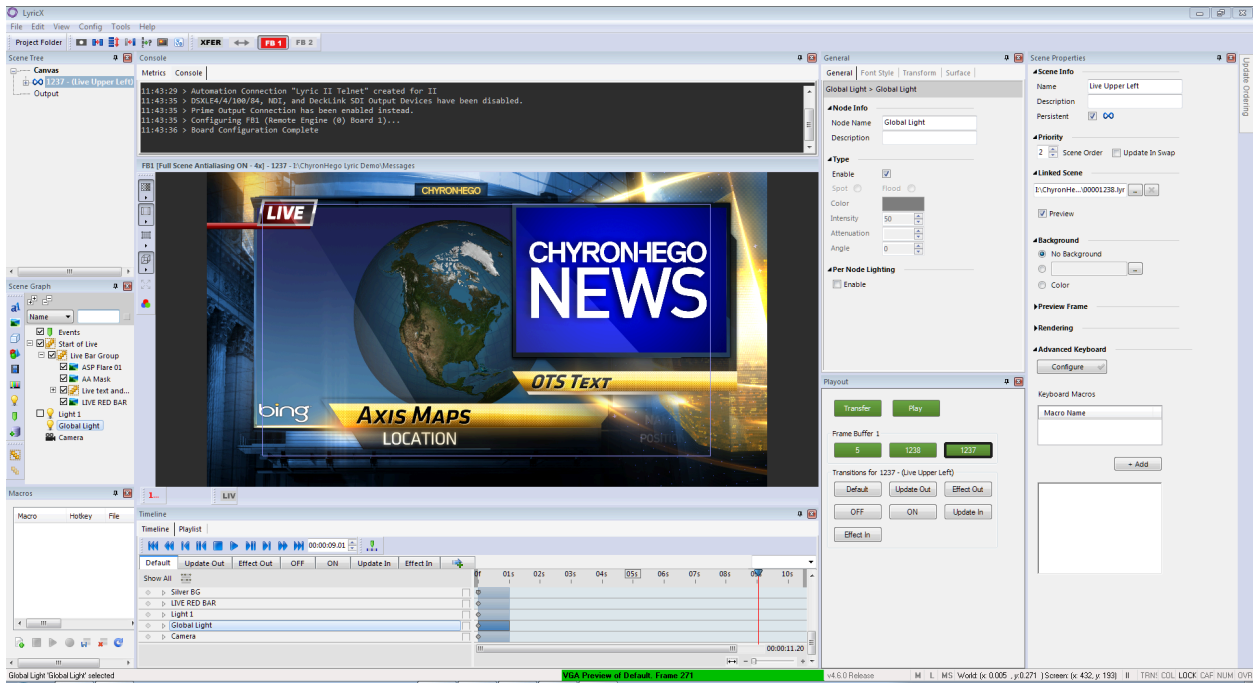
- SDI and NDI devices will be unloaded from the list of devices available in the Input and Output Configuration Dialog.



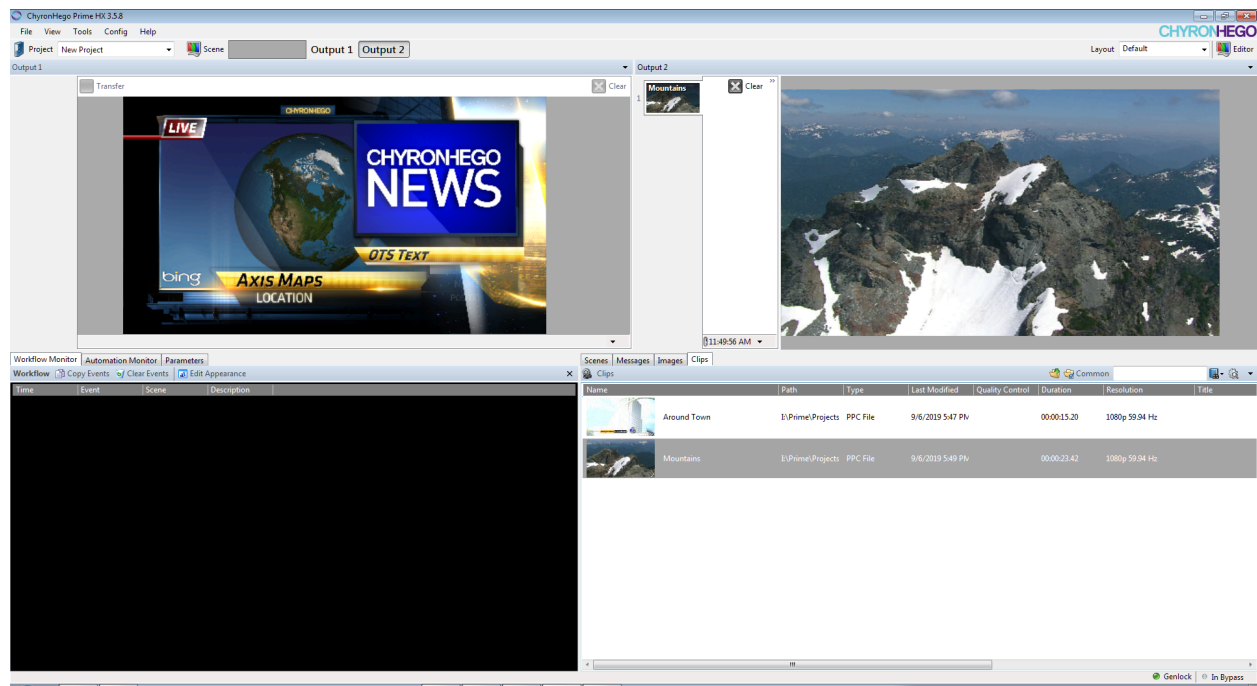
```
Console
11:43:28 > LyricX was run as administrator
11:43:29 > Automation Connection "Lyric II COM1" created for II
11:43:29 > Automation Connection "Lyric II COM2" created for II
11:43:29 > Automation Connection "Lyric II Telnet" created for II
11:43:35 > DSXLE4/4/100/84, NDI, and DeckLink SDI Output Devices have been disabled.
11:43:35 > Prime Output Connection has been enabled instead.
11:43:35 > Configuring FB1 (Remote Engine (0) Board 1)...
11:43:36 > Board Configuration Complete
```



At this point, LyricX can load and play graphics as usual.



Once played to output, the graphics from LyricX are presented in the Prime Output preview.



RESTRICTIONS

- Only a single Output Channel of LyricX is supported.
- The PRIME Output Channel is reserved to receive video from LyricX. PRIME scenes cannot be played to this channel. Other channels can play PRIME scenes, as under normal operation
 - Downstream Input and Antialiasing Settings are ignored.
 - Embedded / AES Audio Routing and Genlock Configuration are as normal.
- LyricX does not receive video from Input Channels configured from within PRIME.
- Preview Channels cannot receive video from LyricX.

ABOUT US

Chyron is ushering in the next generation of storytelling in the digital age. Founded in 1966, the company pioneered broadcast titling and graphics systems. With a strong foundation built on over 50 years of innovation and efficiency, the name Chyron is synonymous with broadcast graphics. Chyron continues that legacy as a global leader focused on customer-centric broadcast solutions. Today, the company offers production professionals the industry's most comprehensive software portfolio for designing, sharing, and playing live graphics to air with ease. Chyron products are increasingly deployed to empower OTA & OTT workflows and deliver richer, more immersive experiences for audiences and sports fans in the arena, at home, or on the go.

CONTACT SALES

EMEA • North America • Latin America • Asia/Pacific
+1.631.845.2000 • sales@chyron.com

