

CAMIO Avid Media Composer Plugin User Guide

V5.5.5

June 2026



ChyronAvid Media Composer PluginUser Guide V5.5.5 June 2026. This document is distributed by Chyron in online (electronic) form only, and is not available for purchase in printed form.

This document is protected under copyright law. An authorized licensee of Chyron Avid Media Composer Plugin may reproduce this publication for the licensee's own use in learning how to use the software. This document may not be reproduced or distributed, in whole or in part, for commercial purposes, such as selling copies of this document or providing support or educational services to others.

Product specifications are subject to change without notice and this document does not represent a commitment or guarantee on the part of Chyron and associated parties. This product is subject to the terms and conditions of Chyron's software license agreement. The product may only be used in accordance with the license agreement.

Any third-party software mentioned, described or referenced in this guide is the property of its respective owner. Instructions and descriptions of third-party software are for informational purposes only, as related to Chyron products and does not imply ownership, authority or guarantee of any kind by Chyron and associated parties.

This document is supplied as a guide for Chyron Avid Media Composer Plugin. Reasonable care has been taken in preparing the information it contains. However, this document may contain omissions, technical inaccuracies, or typographical errors. Chyron and associated companies do not accept responsibility of any kind for customers' losses due to the use of this document. Product specifications are subject to change without notice.

Copyright © 2026 Chyron, ChyronHego Corp. and its licensors. All rights reserved.

Table of Contents

- Avid Media Composer Plugin..... 4**
- Installation.....4
- Operation..... 4

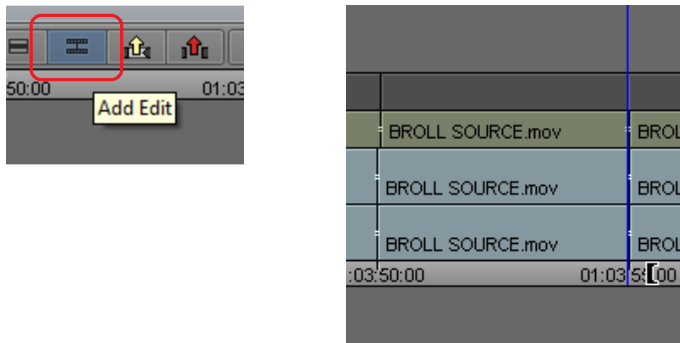


Installation

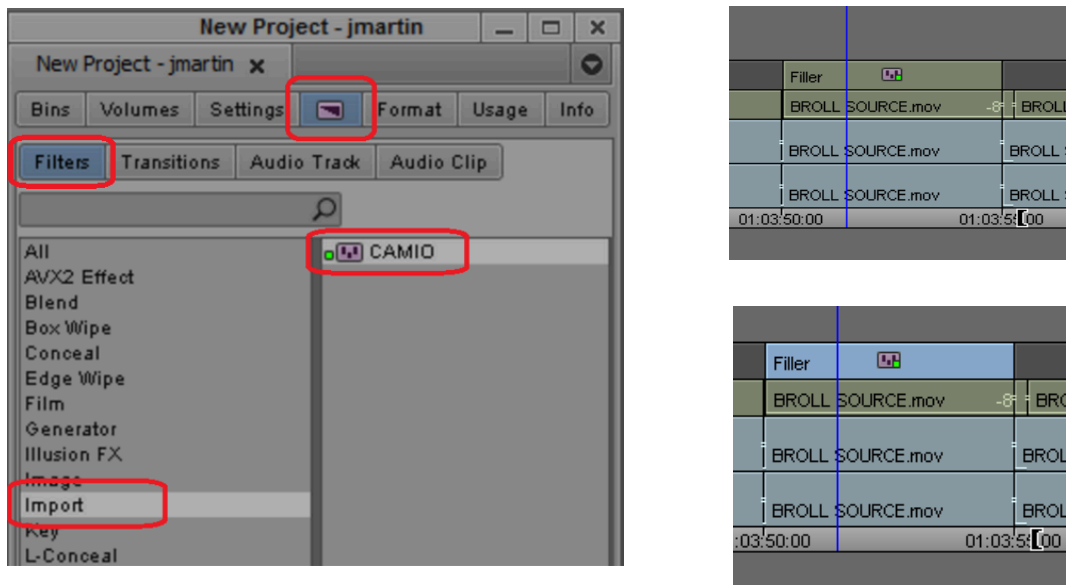
See the **CAMIO NLE Plugins User Guide** for installation instructions.

Operation

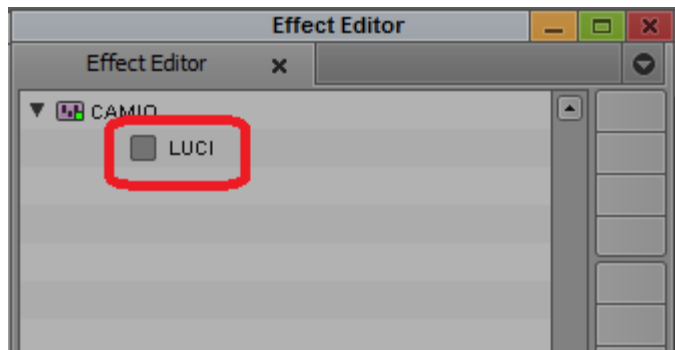
Create a segment in timeline where you wish to insert the graphic.
Use the Add Edit icon at the in point and the out point.




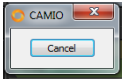
Click on Effects Icon > Filters > Import > CAMIO, drag/drop into timeline. Click on the segment to select/highlight it.



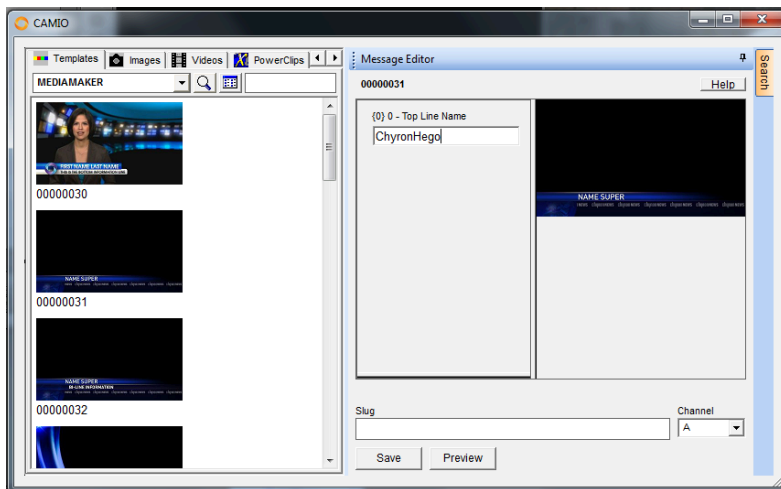
Click on Effect Editor Icon to open Effect Editor window. Click on LUCI button to open LUCI



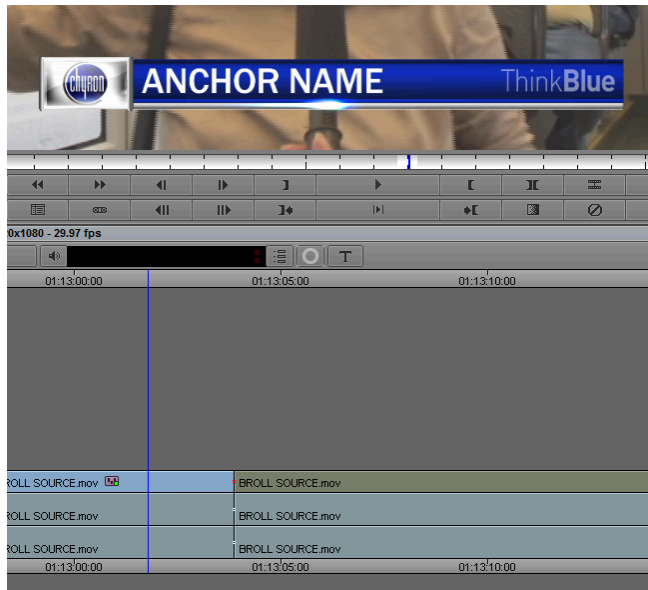
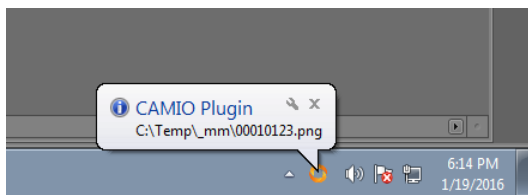
LUCI will open up behind Media Composer. Click on LUCI Icon  in the taskbar to bring LUCI to the front.

Ignore the Cancel Dialog  that is just needed to interact with MC. Can be used to CANCEL out.

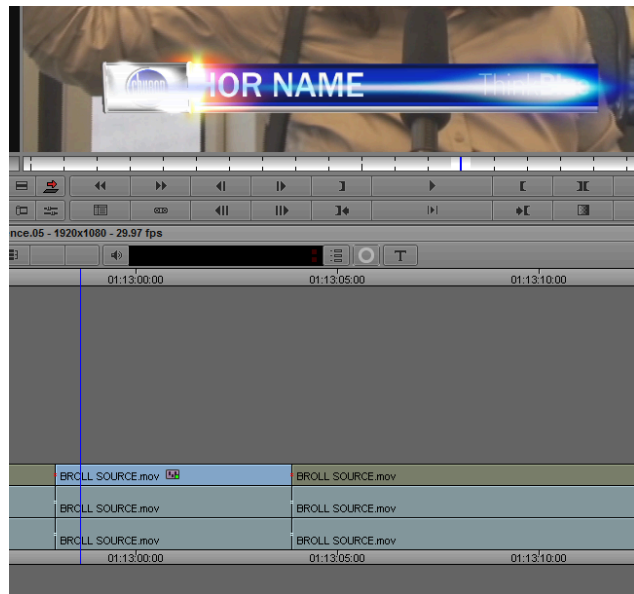
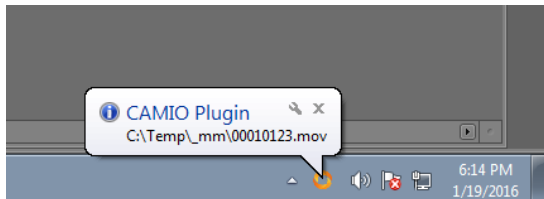
This opens LUCI. Select and fulfill a template and click SAVE.



First the png thumbnail gets delivered and inserted in the timeline.



When the movie is finished rendering it gets delivered and replaces the png thumbnail.



PRELIMINARY NEEDS TESTING

To edit text:

- select object on timeline
- open effects editor select LUCI
- edit
- click save

To edit duration:

same process but change timeline duration using “Overwrite Trim” tool

